



Help us shape future services



Who are we, and what do we do



**South West
Yorkshire Partnership**
NHS Foundation Trust

South West Yorkshire Partnership Foundation Trust are a specialist NHS Foundation Trust that provides community, mental health and learning disability services to the people of Barnsley, Calderdale, Kirklees and Wakefield. We also provide some medium secure (forensic) services to the whole of Yorkshire and the Humber.

Our daily mission is to help people reach their potential and live well in their communities. We employ more than 4,400 staff, in both clinical and non-clinical support services, who work hard day in day out to make a difference to the lives of service users, families and carers.

In Barnsley we provide services such as Neighbourhood Nursing, Community Services, Children Adolescent Mental Health Services (CAMHS), mental health and Learning Disability services, Creative Minds, Spirit in Mind, Recovery Colleges.

With all of us in mind.

Our approach to involving people



NHS
South West
Yorkshire Partnership
NHS Foundation Trust



**Equality, involvement,
communication and
membership strategy**

Sept 2020- March 2024

An inclusive, values-based approach to support our mission and vision

With all of us in mind.



Why do we need your help?

During the pandemic all NHS services have had to adapt and find new ways of working. As a Trust we have done the same.

To help us understand how well we have done, and so we can improve the future of our services we would love your feedback.

This will ensure our services meet the needs of everyone and have all of us in mind.

We also have a survey open which can be used to share your views. You can use the link here to complete the survey:

<https://www.surveymonkey.co.uk/r/HWJJMNZ>

The survey closes on 31 March 2022

Are our services meeting your needs?



Think about how the Trust are providing you, your family, loved one with a service...

Q1. Have services met the needs of you, your family friends/loved ones?

Q2. What has worked well?

Q3. What could be improved?

Estates and the built environment



Thinking about estates and the built environment.....

Q1. How easy has it been to get the services you need?

Q2. What would improve our estates/buildings?

Digital



Thinking about digital.....

Q1. Do you have access to digital equipment? i.e data, a smartphone, tablet, laptop, computer

Q2. Is there anything that would help you?

Timeline



South West
Yorkshire Partnership
NHS Foundation Trust

- Surveys and sessions will run up to and include 31st March 2022
- All feedback from focus groups will, be shared with the involvement team at SWYPFT involvingpeople@swyt.nhs.uk
- A report of findings of all the feedback we receive will be compiled and published on the website here: [Engagement and consultation - South West Yorkshire Partnership NHS Foundation Trust](#)
- The findings will be shared with services to improve future services
- We will keep you updated of our progress throughout the year

Contact us if you need support: involvingpeople@swyt.nhs.uk.

Dawn Pearson

Marketing and communications, engagement and inclusion lead

Dawn.Pearson@swyt.nhs.uk

07867150663

Alexis Ritchie

Engagement, Equality and Inclusion Project Officer

alexis.ritchie2@swyt.nhs.uk

07825 976142

Aboobaker Bhana

Equality and Engagement Manager

Aboobaker.bhana@swyt.nhs.uk

07918 166550

Zahida Mallard

Equality and Engagement Manager

zahida.mallard@swyt.nhs.uk

07771 345177

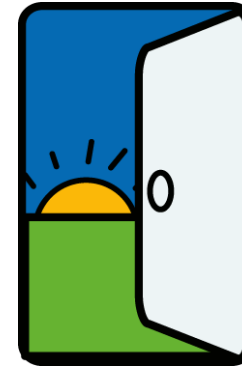
Yasmin Arshad

Equality & Engagement Development Support Officer

South West Yorkshire Partnership NHS Foundation Trust

yasmin.arshad@swyt.nhs.uk

07867 787409



Or find us on the
intranet